

7569

7568

7566

7565

7564

7563

7562

7561

757

W

Ga

St

Ga

St

Ga

St

Ga

St

Ga

St

Ga

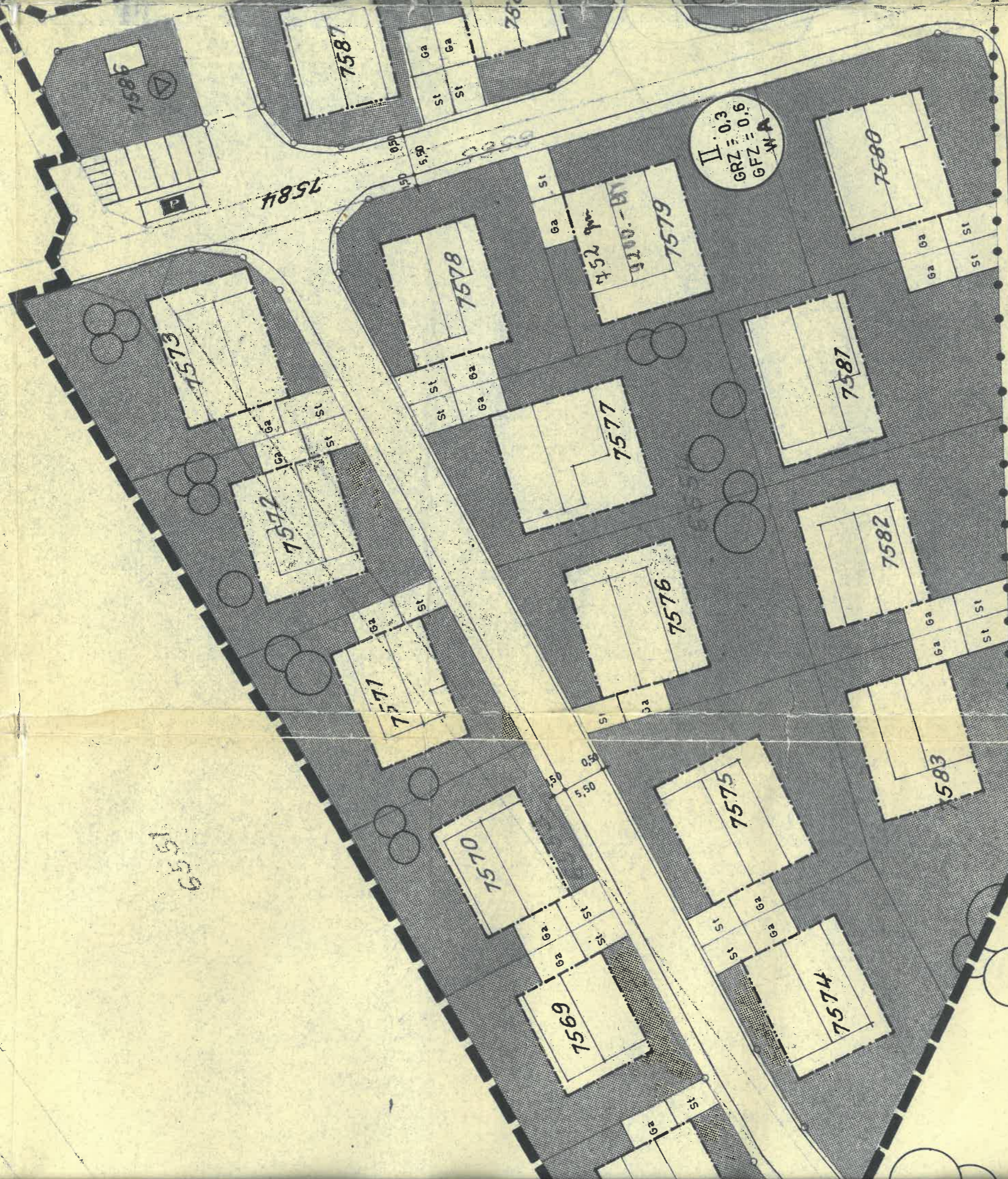
St

5.50

0.50

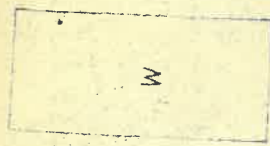
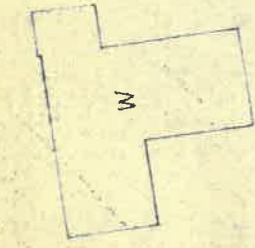
0.50

5.50



6551

7584



65

7584

7586

7587

7578

452 per

3100 - BT

7579

II .03  
GRZ = 0.6  
GFZ = 0.6  
W.A.

7580

7588

7589

7590

7591

7592

7597

7598

7599

7600

7677

7670

609

7673

7674

7679

7676

7677

7585

6556

4.00

5.50

1.50

5.50

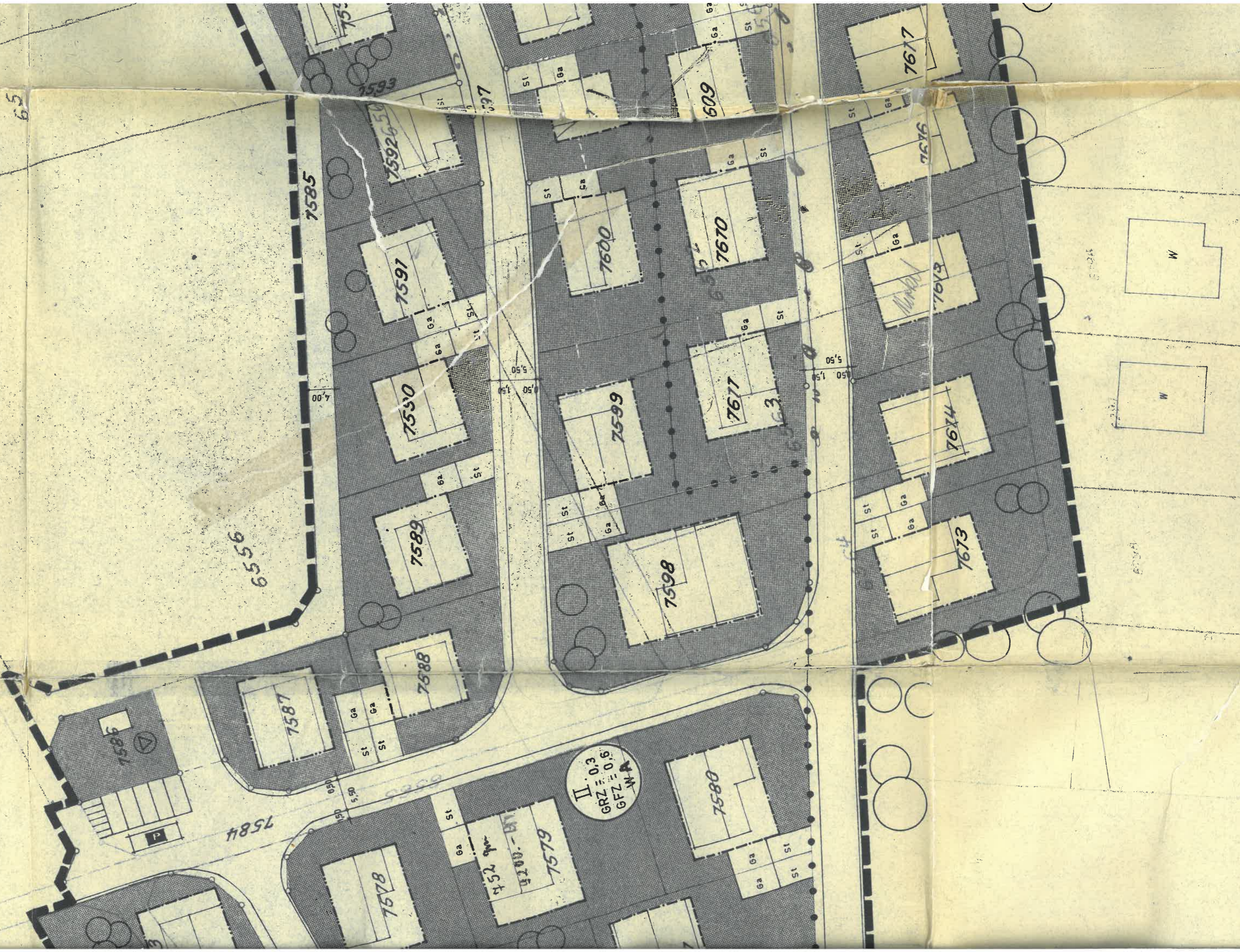
1.50

W

W

6094

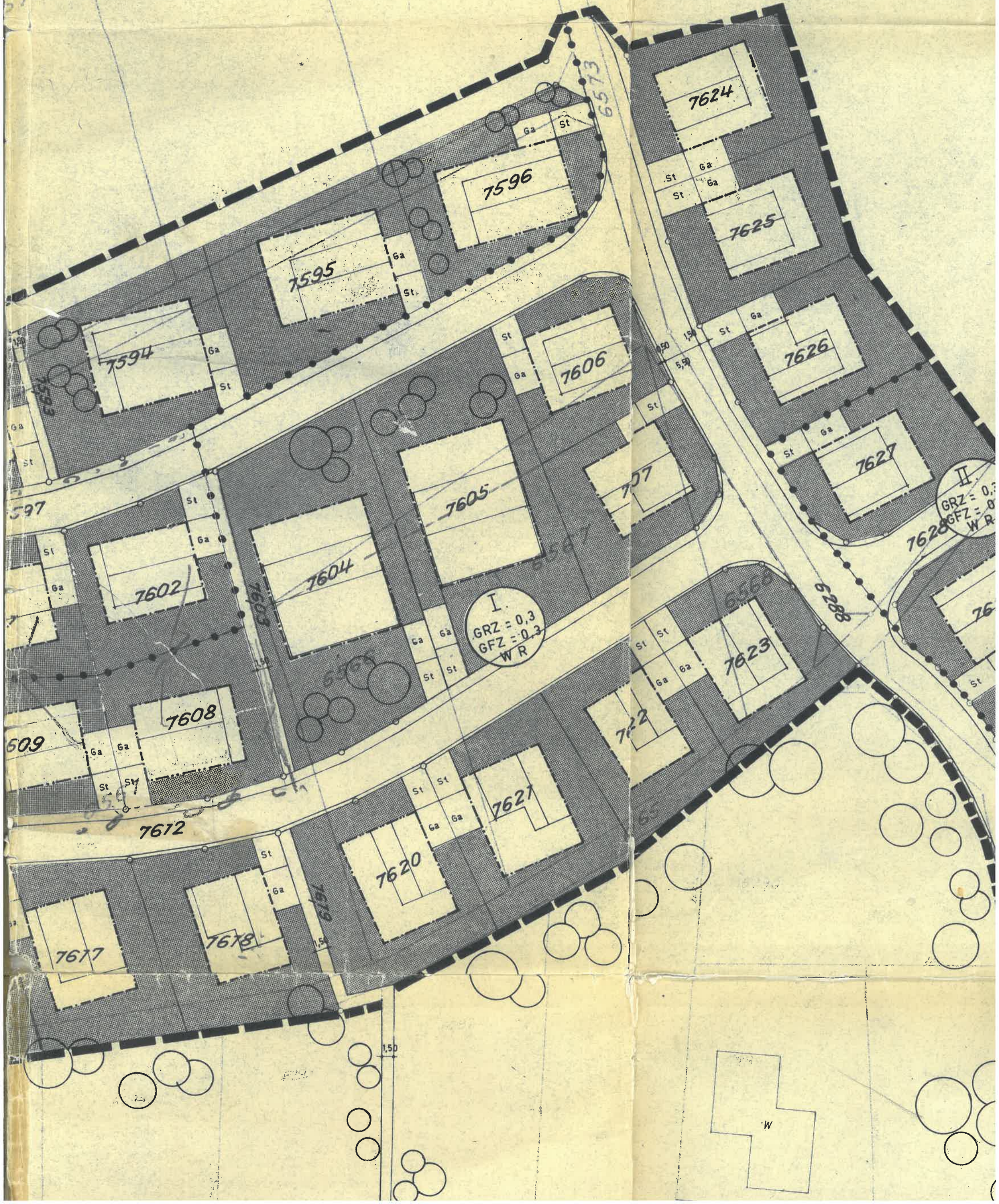
6094



6558

6559

6572



I.  
 GRZ = 0.3  
 GFZ = 0.3  
 W R

II  
 GRZ = 0.3  
 GFZ = 0.3  
 W R

W

6559

6572

6573

7596

7624

7625

7606

7626

7605

7627

7628

II  
GRZ = 0,3  
GFZ = 0,6  
W R

7629

6569

7623

7630

I  
GRZ = 0,3  
GFZ = 0,3  
W R

7622

7631

7620

7621

6560

1023

1,50

5,50

W

